



SDC-View Manual

Table of contents

1	Guide to the manual	2
1.1	General note	2
2	SDC-View	3
2.1	System requirements	3
2.2	Program start	3
2.3	SDC explorer	4
2.4	Playback window	5
2.5	Export and printing	6
2.6	Authentication	8
2.7	Find SDC	9
2.8	Menu commands and buttons	10

Table of figures

1:	SDC explorer	4
2:	Playback window	5
3:	Print bitmap	6
4:	Export	7
5:	Sample authentication	8
6:	Find SDCs	9

1 Guide to the manual

Dear User,

It gives us great pleasure to introduce to you the latest version of our program SDC-View. This documentation comprises all information necessary for using the program.

All data and information contained in this manual have been checked against the software. However, it is impossible to rule out the possibility of errors entirely. Neither the editor nor the author can accept any legal responsibility or liability for incorrect information or the consequences thereof. Suggested improvements or notices of error are welcome.

Yours,

The Team of Authors

1.1 General note

The hardware and software of the Digital Video Management System – alpha may only be used in accordance with the stipulations of the licence agreement. No other uses are permitted. Copying of the software in particular – for whatever purpose – is against the law and is subject to both criminal and civil proceedings.

We reserve the copyright to the System Manual including all its component parts. The manual is only entrusted to our customers or the operators of our systems. It may not be used outside the context of the copyright law without the editor's permission. This applies in particular to reproductions, translations, storage and processing in electronic systems or other media.

© All rights reserved.

Date of issue: November 2003

2 SDC-View

The SDC-View program is used to view and to export the content of a SDC which was generated by a Digital Video Management System – alpha. A SDC (Safeguard Data Container) contains recorded camera pictures in encoded form. Due to the authentication (use of a signature) its genuineness is approved by European courts.

The SDC-View program has been designed for the application on Windows computers. It does not require a Digital Video Management System – alpha.

2.1 System requirements

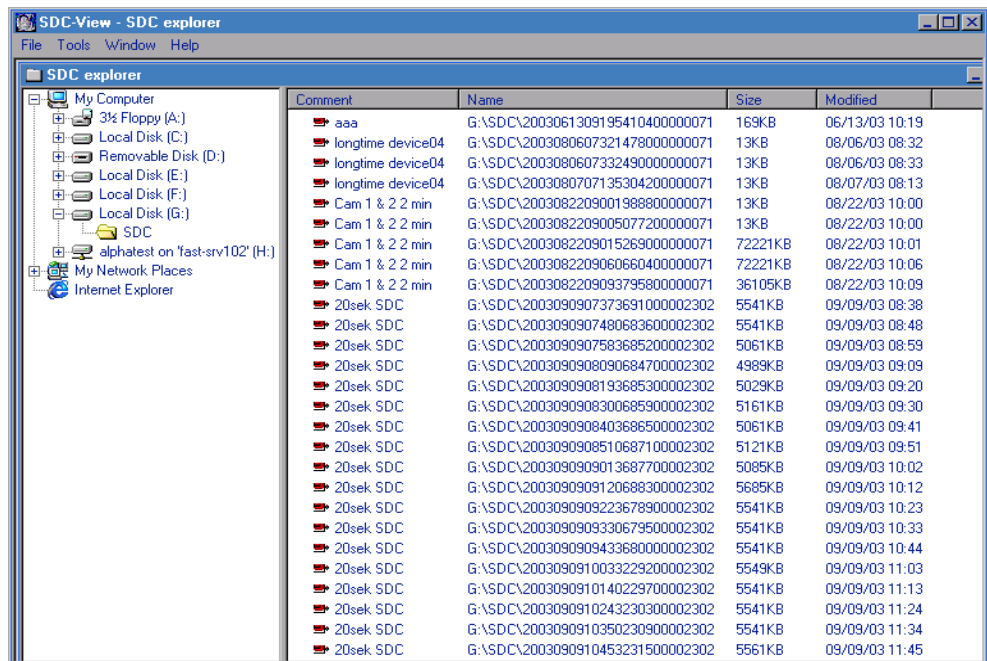
The SDC-View can be used on computers with MMX processor and a primary memory of at least 64 MBytes under the following operating systems:

- Windows 95
- Windows 98
- Windows Me
- Windows NT, Version 4.0, Service pack 4 or higher
- Windows 2000
- Windows XP

2.2 Program start

The program SDC-View can be executed on the computer without any installation. Start the program by doubleclick on the file SDCView.exe in the folder SDCView or on a corresponding link.

2.3 SDC explorer

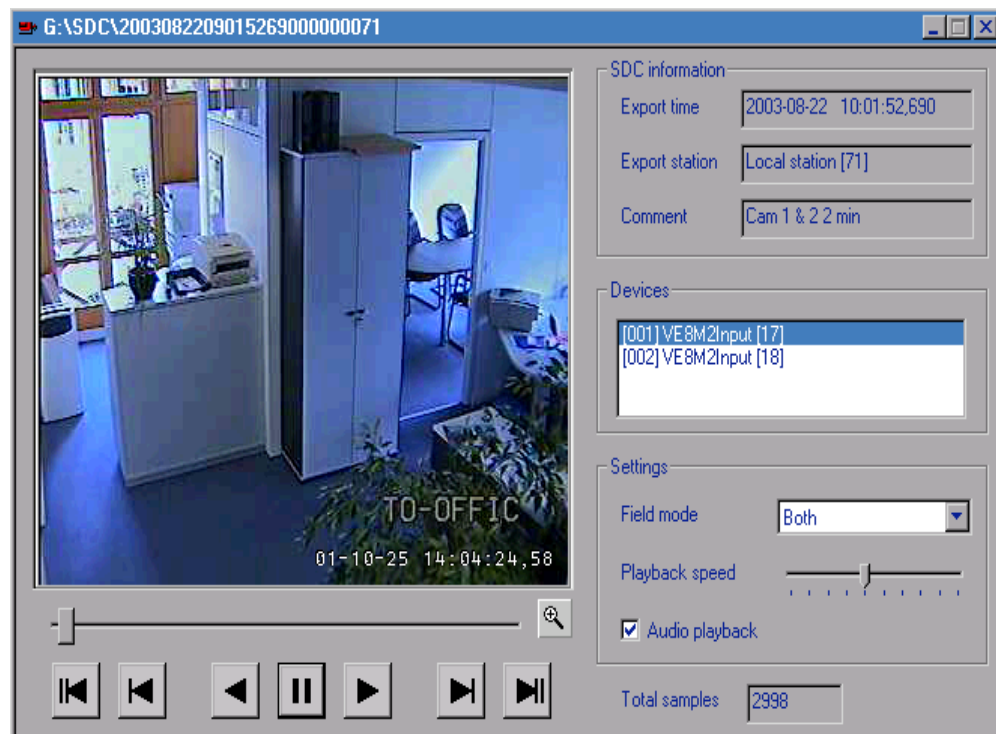


1: SDC explorer

After the start, SDC-View opens a window for the SDC explorer. This has been designed analogously to the Windows explorer from Microsoft, however, display in the right section SDC files only. Other file types and folders are hidden.

2.4 Playback window

Double click at a SDC file in the SDC explorer and the playback window is opened.



2: Playback window

Pictures


A picture of the selected camera is displayed in the left section of the playback window. Select individual pictures by means of the button below the camera picture or let the sequence of pictures run forward or backward. Using the slider control you can find a certain range of time quickly within a large sequence of pictures.

SDC information

The information concerning this SDC are displayed at the top right side in the playback window. The «Export time» field indicates the date and time of preparation of the SDC. The ID of the generating station can be seen in the «Export station» field. A comment stored in the SDC is output in the «Comment» field.

Devices

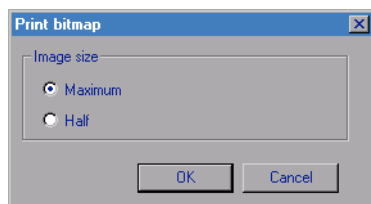
A SDC can contain the pictures of several cameras or also several ranges of time. In the «Devices» field you can select the data source the pictures of which shall be displayed.

- Settings** In the 'Field mode' field you can define whether frames (Both) or fields (Odd, Even) are displayed.
- Using the slider control you can define the 'Playback speed'. In the 'Audio playback' check box you can select whether recorded audio data are reproduced or not.
- Using  you can change to the zoom mode. Clicking at a picture with the left mouse button causes zooming in, with the right button zooming out.
- Total samples** The field <Total samples> shows the number of GOPs (group of pictures at MPEG-2) from the data source selected.
- Picture size** You can display the pictures of a SDC in two sizes. To do so, use in the inactive zoom mode the right mouse key to click at the picture and select HALF SIZE or FULL SIZE. Alternatively, you may use the commands WINDOW/HALF SIZE and WINDOW/FULL SIZE from the menu line when the playback window is active.

2.5 Export and printing

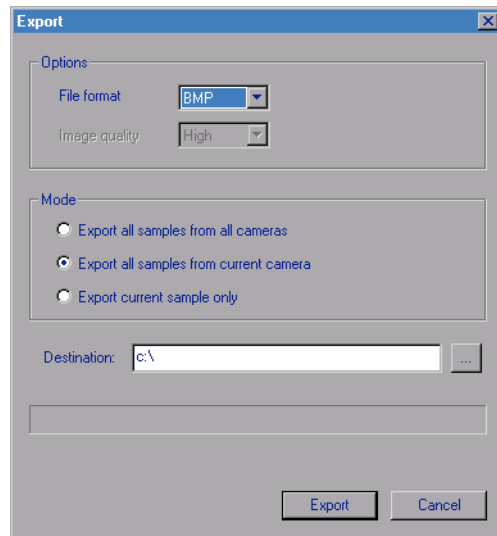
- Printing** You can print a camera picture on a printer. To do so, use in the inactive zoom mode the right mouse key to click at the picture and select PRINT. Alternatively, you may use the command TOOLS/PRINT from the menu line when the playback window is active.

Choose the picture size for printing.



3: Print bitmap

- Export** You can export camera pictures (to be stored as bitmap, JPG or MPG). To do so, use in the inactive zoom mode the right mouse key to click at the picture and select EXPORT. Alternatively, you may use the command TOOLS/EXPORT from the menu line when the playback window is active.




4: Export

In the field <File format> you can choose bitmap (BMP), JPG or MPG. Using JPG you can specify the compression in <Image quality>.

You can 'Export all samples from all cameras', 'Export all samples from current camera' or 'Export current sample only' as BMP or JPG.

You can 'Export all samples from current camera' as MPG.

Enter the folder name including the path in the <Destination> field or click on  in order to select the destination directory. For a single picture you have to type a file name. A file of a series is named by the system. For example: The source of the picture of 77_201_01_20001025113003535.JPG was a camera (201) with ID 1 and the picture was recorded by the system with ID 77 on 2000-10-25 at 11.30.

Use <Export> to start the export.

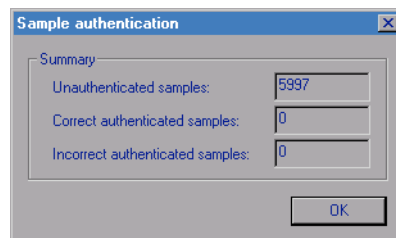
2.6 Authentication

SDC Each SDC is authenticated as a whole (provided with a signature). The SDC-View program allows to check the correct authentication. Using the activated SDC explorer, you can switch on or off the check for all SDCs using **TOOLS/SDC AUTHENTICATION**. With intact authentication a green tick is displayed in front of the relevant SDC, a red exclamation mark is given for a damaged authentication.

SDCs which have not been generated by a Digital Video Management System – alpha and which have therefore no authentication, are identified by a blue line.

Checking the authentication can take some time for a large number of comprehensive SDCs.

Sample With the command **TOOLS/SAMPLE AUTHENTICATION**, you can check the authentication of all camera pictures contained in this SDC and have an overview.

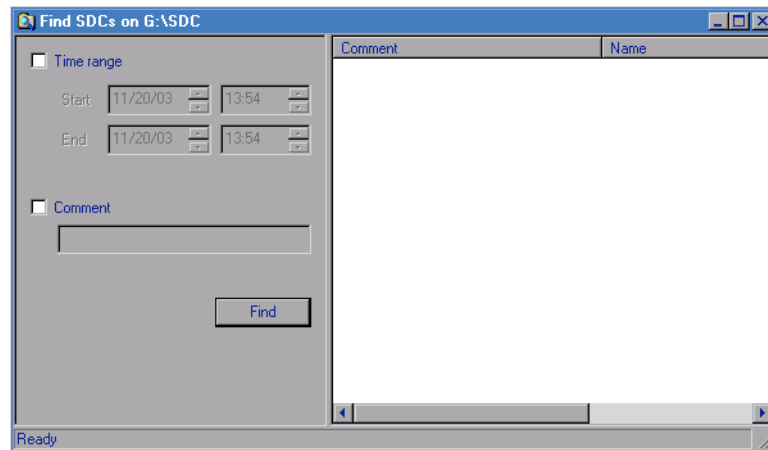


5: Sample authentication

Authentication of the individual pictures is not a standard feature of the Digital Video Management System – alpha. Optional devices can compress camera pictures and send them to the Digital Video Management System – alpha via a network. Genuineness of these individual pictures can be ensured via an authentication.

2.7 Find SDC

You can search in the selected folder for specific SDCs. Use TOOLS/FIND to open the window:



6: Find SDCs








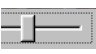

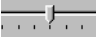
You can use a Time range and the Comment stored in the SDC as search criteria. Start the search using 'Find'.

2.8 Menu commands and buttons

Menu
commands

Command		Description
File	New SDC Explorer	An(other) SDC explorer is opened.
	Close	The selected window is closed.
	Exit	The SDC-View is closed.
Tools	SDC authentication	Authentication of the SDCs is switched on or off for the active SDC explorer.
	Sample authentication	Authentication of the pictures in the selected SDC is checked.
	Export	The selected camera pictures are stored as bit-map, JPG or MPG.
	Print	The selected camera picture is printed.
	Find	Find specific SDCs.
Window	Full size	The camera picture is displayed in full size.
	Half size	The camera picture is displayed in half size.
	Cascade	The opened windows are arranged in an overlapping way.
	Split	The spitting bar between the two parts of the SDC explorer can be shifted.
	Arrange icons	The icons of the minimized window are arranged at the lower screen edge.
Help	About SDC View	Program version and copyright are displayed.

Buttons

Button	Function
	Switch to first picture
	Back one picture
	Play picture sequence backward
	Stop sequence
	Play picture sequence forward
	Forward one picture
	Switch to last picture
	Slide switch for image search run
	Zoom mode on/off
	Slide switch for playback velocity

